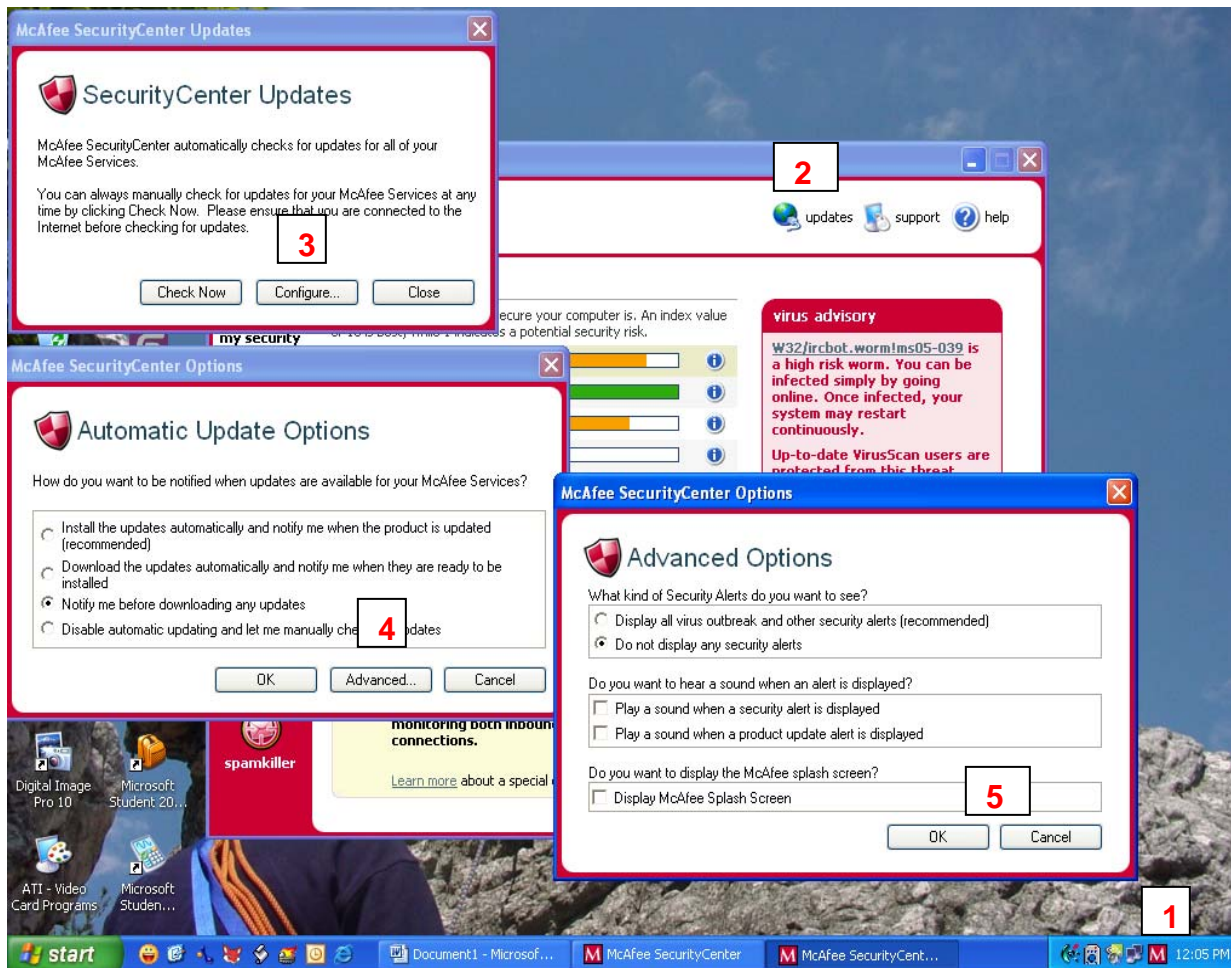


Pop Ups for McAfee Virus Scan & Spy Sweeper How to turn them Off

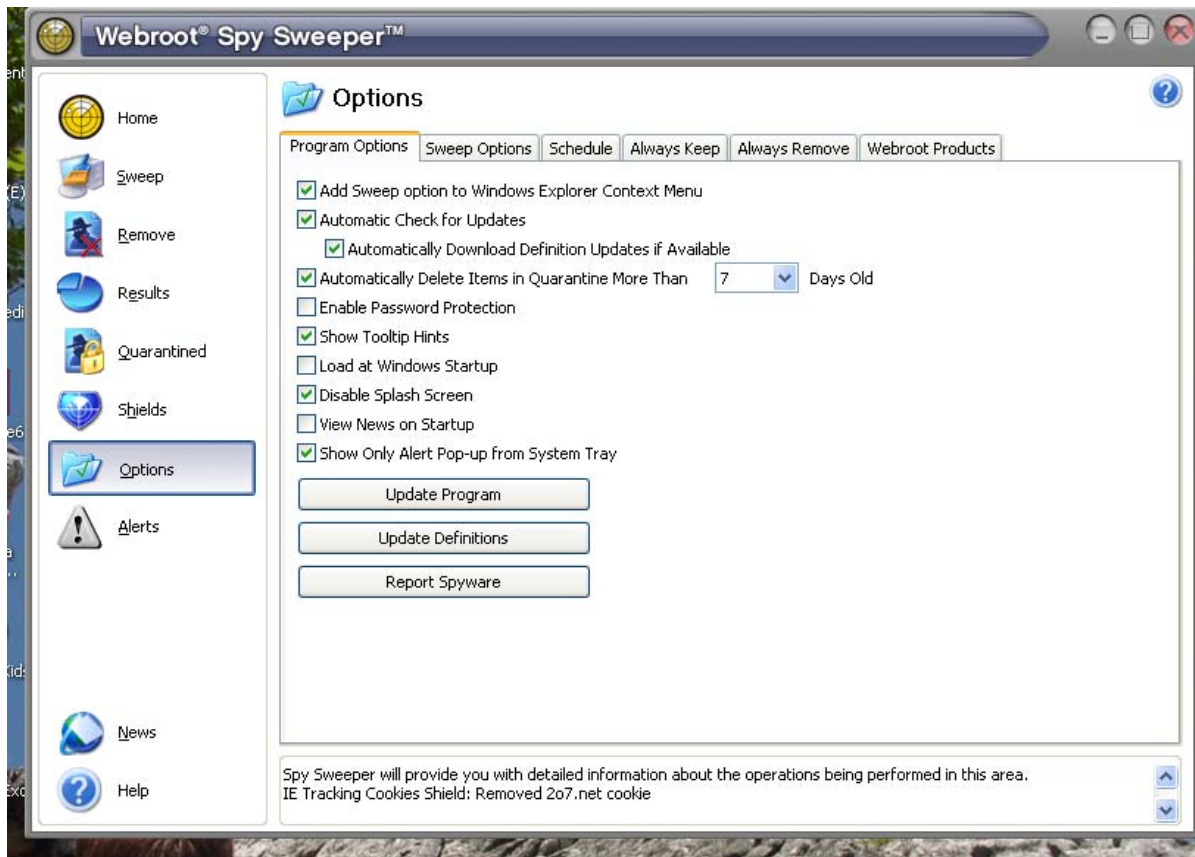
Open McAfee Security Center by double clicking on the icon by the clock a white letter M in a red square (#1). Then select Update at top right (#2) then select Configure on the box that (#3) comes up. Then another box comes up and select Advance (#4). Once in the Advance Options (#5) you can deselect what ever you want I use the settings as shown below. Once you have set the setting you want OK and Close your way out

The boxes should be on top of each other I played with them so they all show at once and add the boxes with re numbers to make it easier.



Open Spy Sweeper and select Options and select the options you want. I use the following as I start up Spy Sweeper manually when I go on the Internet to sites I do not trust. I use all the Shields because I know what should be in startup or I can find out the rest of you may not

know this information so you may want to turn off the Startup Shield. Continue on to see how to turn it off.



Open Spy Sweeper and select Shields then select the Startup Programs tab and remove the check marks as shown below.

